

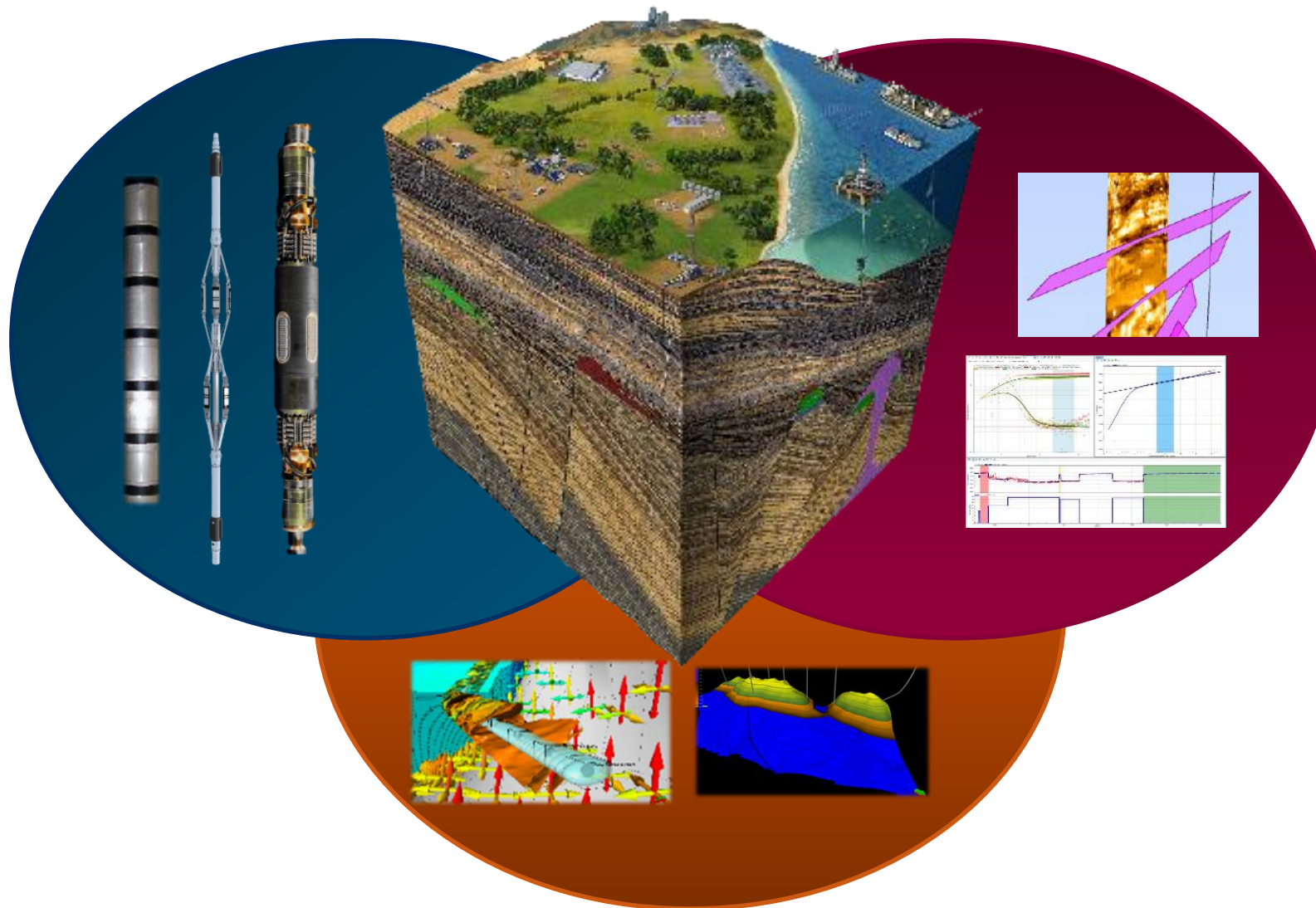
Techlog - Wellbore Platform Overview

Software Integrated Solutions

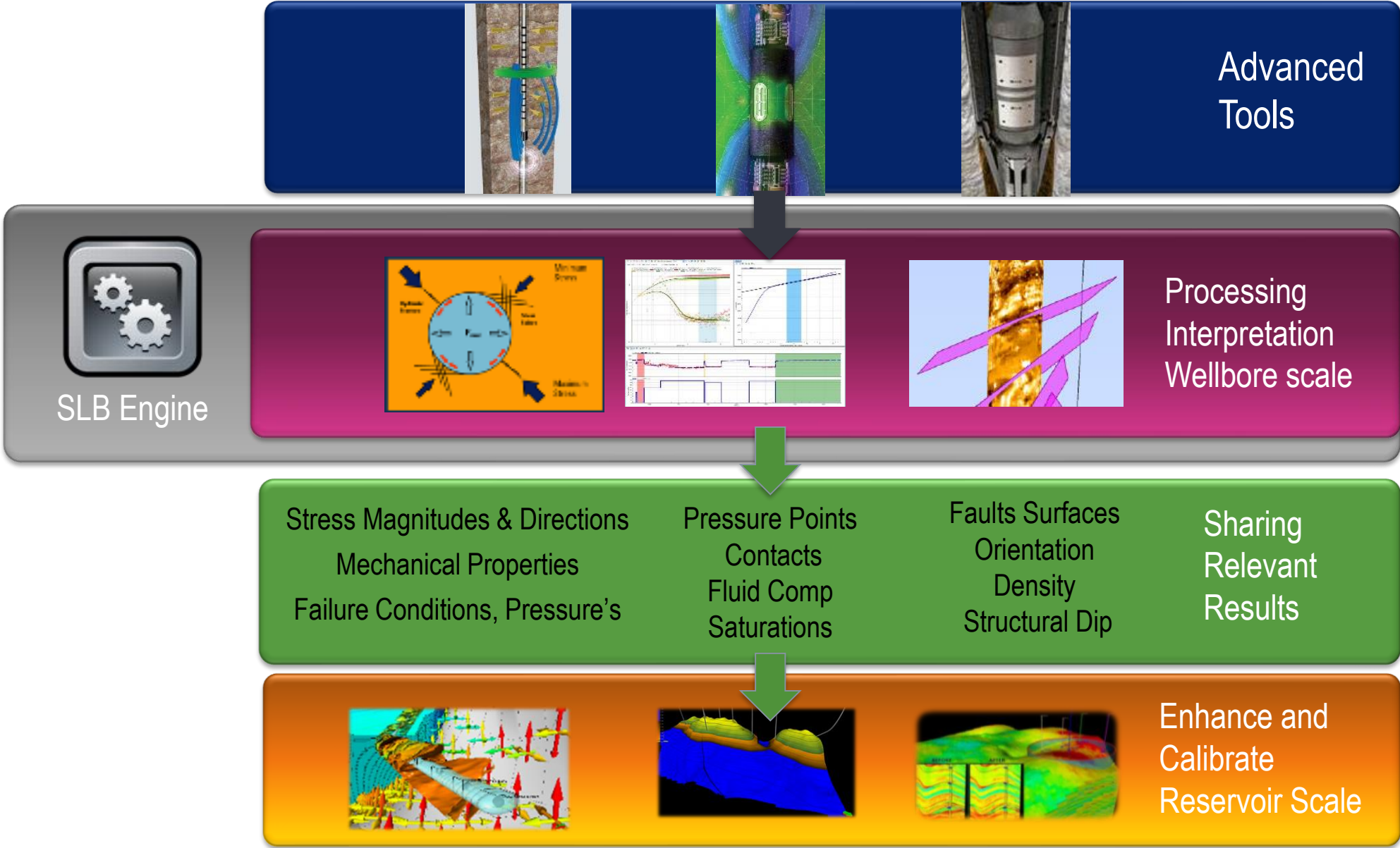


Schlumberger

Unlocking the value of Advanced Measurements



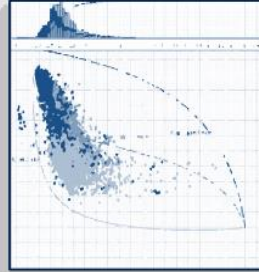
Unlocking the value of Advanced Measurements



Disciplines Working Together



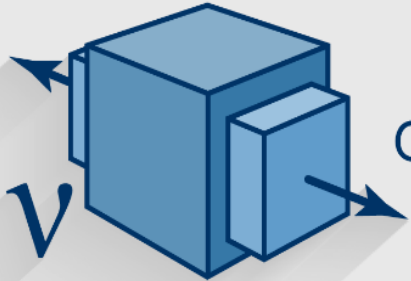
Petrophysics



Rock
Physics



Borehole
Geology

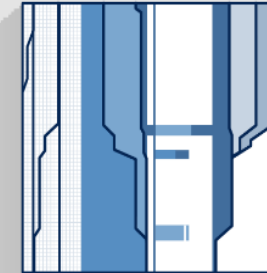


Geomechanics

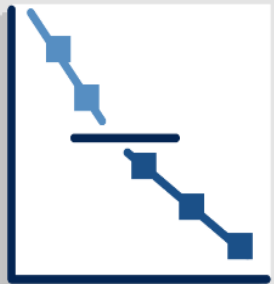


Techlog

Because every well counts



Production



Reservoir



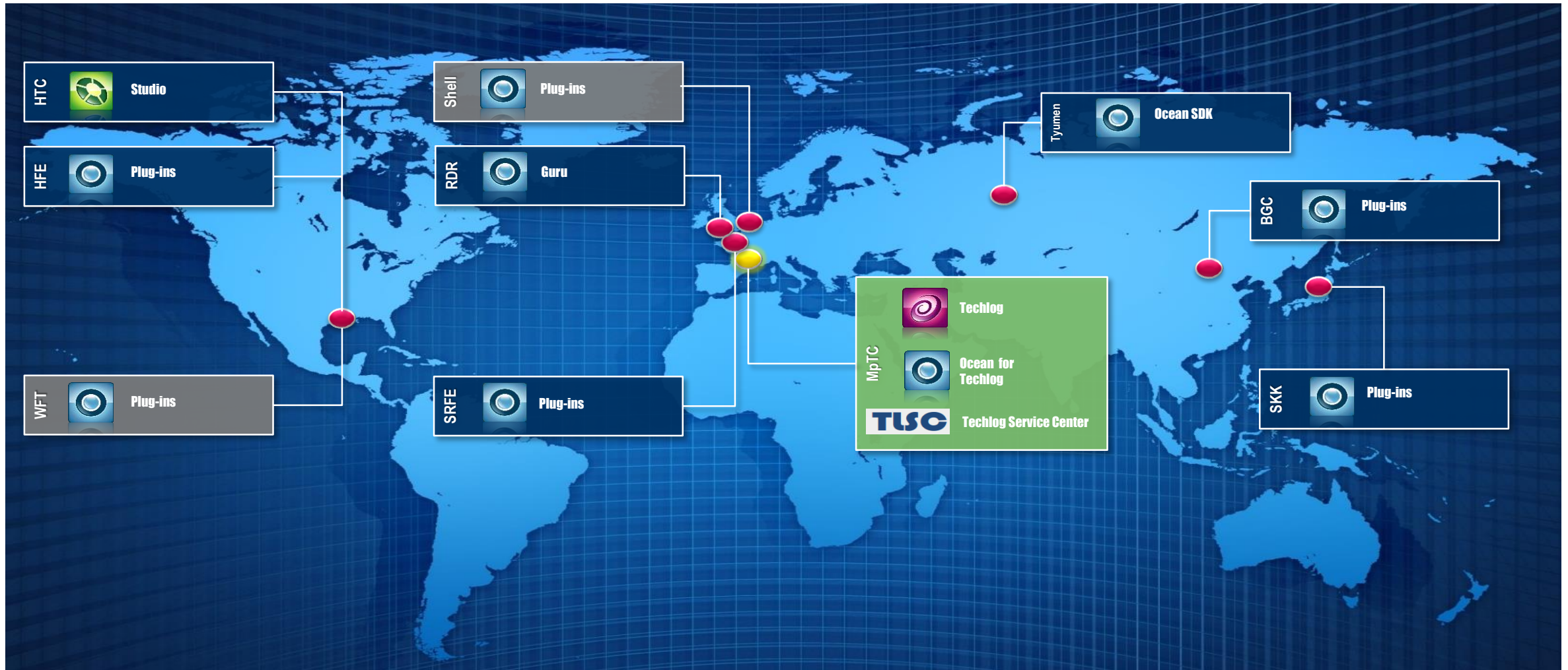
Drilling



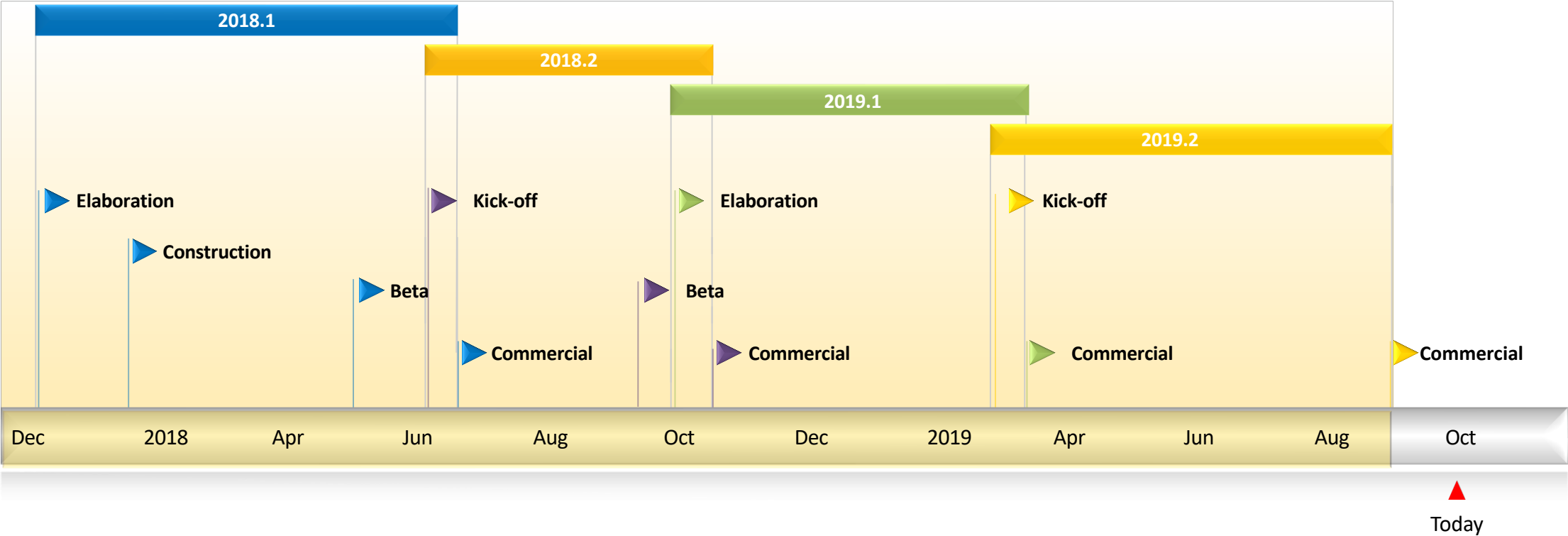
Extensibility

Schlumberger

Where is Techlog developed?



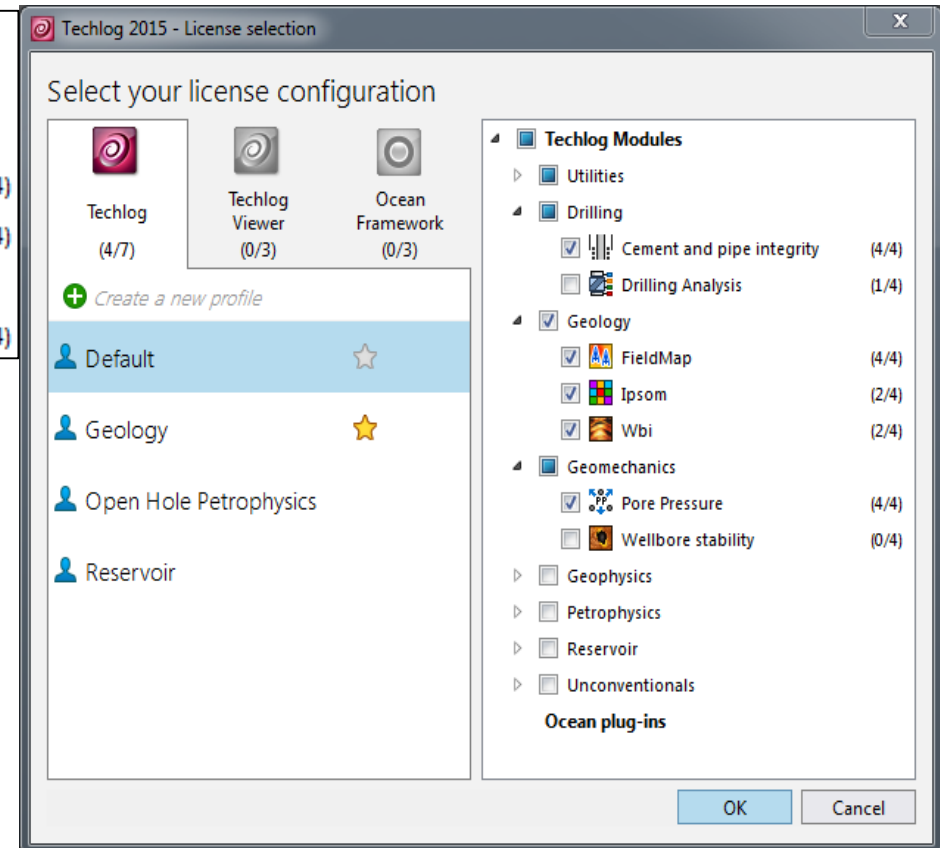
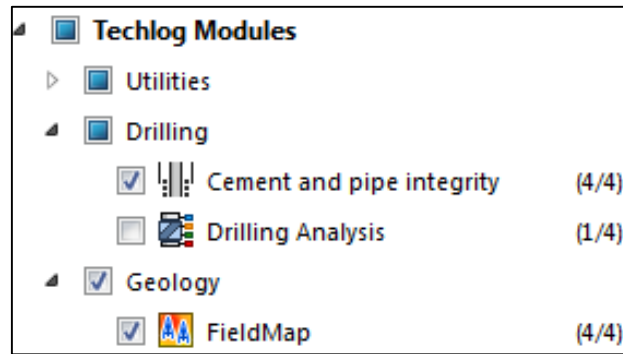
Release Schedule 2019



Techlog 2020.1 Planned Released March 2020

Module manager

- Simplified license selection
- Single interface enabling:
 - Use different Core Licenses
 - Profile: User defined set of licenses
 - Favorite profile: default license selection
 - Select Modules and Plug in's
 - Module / plug in description
 - View number of used/total seats
 - Expiration date for each license feature



Ipsom

Ipsom is a unique classification module that enables automatic facies and rock type identification. The 2D Indexed and probabilised self-organised map is designed for use in geological interpretation of well logs, and for the optimal derivation of petrophysical properties.

Expiration date: Friday, January 22, 2016

Techlog Interactive Suite

Application modules



CoreDB



Techcore



Saturation-Height
Modeling



Quanti



Quanti.Elan



Thin Bed
Analysis



Nuclear Magnetic
Resonance



FPress



Fluid Contact



Wellbore
Imaging



Ipsom



K.mod



Geophy



Field Map



Acoustics



3D
Petrophysics



Pore Pressure
Prediction



Wellbore
Stability



Completion
Geomechanics



Cased
Hole



Unconventionals



Wellbore
Integrity



Production
Logging



Time Lapse
Analysis

Platform utility add-ons



Python



Real-time



Techdata +



Techstat



Advanced
Plotting



Connectivity

Platform modules



Techplot



Techdata



Environmental
Corrections

Schlumberger Platforms



Studio



Ocean

Wireline and Drilling & Measurement Suites

Schlumberger unlocks proprietary algorithms and processing techniques for customers in Techlog.

Techlog
All-in-One Wireline Suite

All-in-One Suite
Enables access to all commercialized Techlog Suites

Wireline and D&M Technology in Techlog

Enables access to all commercialized Techlog Suites covering Wireline and D&M

Techlog
Petrophysics Suite

Petrophysics Suite

Wireline and D&M Technology in Techlog

Compute R_v , R_h , dip from R_t Scanner and used in thin laminated sand analysis.

Techlog
Advanced Borehole Geology Suite

Advanced Borehole Geology Suite

Wireline and D&M Technology in Techlog

Extract the full digital value from borehole images, reservoir modeling ready

Techlog
Wellbore Integrity Suite

Wellbore Integrity Suite

Wireline and D&M Technology in Techlog

Process and interpret logs for cement evaluation and pipe inspection

Techlog
Acoustics Interpretation Suite

Acoustics Interpretation Suite

Processing & Interpretation for all Schlumberger sonic technology

Wireline and D&M Technology in Techlog

Comprehensive processing and interpretation of Schlumberger sonic data

Techlog
Formation Testing Suite

Formation Testing Suite

Wireline and D&M Technology in Techlog

Incorporating all the functionality of InSitu Pro into the Techlog platform

Techlog
NMR Suite

NMR Suite

Wireline and D&M Technology in Techlog

Evaluation of carbonate and shale pore systems via spectral analysis of NMR

Techlog
Geomechanics & Advanced Acoustics Suite

Geomechanics & Advanced Acoustics Suite

Wireline and D&M Technology in Techlog

Stress, fracture, and shale anisotropy analysis from image and sonic logs

Techlog
Unconventional Reservoirs Suite

Unconventional Reservoirs Suite

Wireline and D&M Technology in Techlog

Sequential log analysis for organic shale. Stage & perforation design.

Free Viewers

Techlog
Completion Advisor View

Inputs to Completion Advisor View

Completion View Advisor Components

Plan the stages and perforations to complete a horizontal well.

Techlog
Wellbore Integrity View

User friendly viewer for sonic, USIT and Isolation Scanner data.

Techlog
Formation Testing View

Formation Testing View is the viewer version of Formation Testing Suite.

Faster Data Delivery for Evergreen Reservoir Models

